



RSET's

Ladhidevi Ramdhar Maheshwari  
**night college of commerce**

ENLIGHTENING FUTURE

**LRMC**



# PROSPECTUS

## 2024-25



## College Activities



## Main Donor



Madhusudan R. Maheshwari

Dear Students,

A warm welcome to you in RSET campus in this academic year of 2024-25!

Ladhidevi Ramdhar Maheshwari Night College of Commerce was established in the year 2014 after obtaining permission from Government of Maharashtra and University of Mumbai. Over the years, the college has made great progress in the field of education and extra-curricular activities.

Intelligent human resource having strong character will put our country on the path of progress. Academicians have a pivotal role to play in shaping tomorrow's leaders. Keeping this in mind we have appointed well qualified staff and also provided a state of the art infrastructural facilities in the form of spacious classrooms, well-stocked library, a cafeteria, computer lab with high speed computers and an air conditioned auditorium to conduct extra-curricular activities. Pravinchandra D. Shah Sports Academy acts as a training platform for future sportsmen.

Ladhidevi Ramdhar Maheshwari Night College of Commerce is easily accessible and reachable to the students, as it is located on Swami Vivekananda Road in RSET Campus. There has been great response from the regular as well as working students who are unable to attend lectures

during the day. Our college understands the pulse of young generation and strives to mould them holistically into excellent human beings.

I welcome you to be a part of this great institution and participate in its wonderful and colourful activities. I wish you all the best and hope you will have a fruitful and memorable years of your academic life.



**The great aim of  
education is not knowledge  
but action.**

**- Herbert Spencer**

# OFFICE BEARERS, TRUSTEES & MEMBERS OF THE MANAGING COMMITTEE OF RSET (2017-2022)

## Office Bearers

Shri Saraf Ashok M.	President	Shri Bajaj Rajkamal R.	Vice President
Shri Kejriwal Kailash S.	Hon. Secretary	Shri Saraf Lalit S.	Treasurer
Shri Khemka Jagdish Prasad I.	Joint Treasurer	Shri Kabra Sunil S.	Hon. Joint Secretary
Shri Dalmia Vinod L.	Hon. Joint Secretary		

## Donor Trustees

Shri Agrawal Anil B.	Smt. Bajaj Mainadevi R.	Shri Bajaj Vinodkumar R.
Shri Bajaj Rajkamal R.	Smt. Bajaj Deepa V.	Smt. Bajaj Seema R.
Ms. Bajaj Smriti R.	Shri Bajaj Abhishek V.	Ms. Bajaj Anushree R.
Shri Bubna Ramprakash B.	Smt. Bubna Sharda R.	Shri Bubna Ashish R.
Shri Bubna Manish R.	Smt. Bubna Seema A.	Smt. Bubna Anisha M.
Shri Chandgothia Rajaram N.	Shri Deora Vinodkumar M.	Shri Garodia Ashok N.
Shri Goenka Manoj Kumar M.	Shri Goenka Sajjan D.	Shri Goenka Suresh D
Shri Goenka Narendra D.	Smt. Goenka Nishita S	Shri Goenka Samir S.
Shri Goyal Ravi B.	Shri Jajodia Vishal N.	Shri Karwa Krishna Kumar M.
Shri Kejriwal Krishna R.	Shri Lakhotia Rakesh B.	Shri Lakhotia Akhilesh R.
Shri Mansinghka Mahendrakumar V.	Shri Maheshwari Madhusudan R.	Shri Murarka Suresh C.
Shri Nathwani Dhanraj P.	Shri Pansari Suresh M.	Smt. Pansari Priyanka K.
Smt. Pavankumar Rita	Shri Pavankumar Vikas	Shri Podaar Vinod V.
Smt. Rajpuria Archita N.	Shri Saraf Mahavirprasad G	Shri Saraf Ashok M.
Dr. Saraf Naresh M.	Shri Saraf Prakash M.	Smt. Saraf Neera A.
Smt. Saraf Renu N.	Smt. Saraf Shilpa P.	Ms. Saraf Niharika N.
Shri Saraf Yash P.	Shri Saraf Vinay S.	Shri Seksaria Rajkumar K.
Shri Seksaria Nandkumar K.	Shri Seksaria Harshkumar N.	Shri Seksaria Tarun N.
Shri Shah Harish P.	Smt. Shah Bina H.	

## Elected Trustees

Shri Dalmia Vinod B.	Shri Goyal Badrinarain K.	Shri Jhunjhunwala Banwarilal R.
Shri Kejriwal Kailash S.	Shri Kabra Sunil S.	Shri Maheshwari Piyush M.
Shri Rajpuria Kamalnayan K.	Shri Thacker Jairaj C.	

## Donor Managing Committee Members

Shri Mhaiskar Virendra D.	Shri Poddar Arvind M.	Shri Saraf Sharad M.
Smt. Shah Amira H.	Smt. Shah Anushka H.	

## Elected Managing Committee Members

Shri Agarwala Vinod B.	Shri Chirania Sudheer J.	Shri Dalmia Girdharilal L.
Shri Dalmia Vinod L.	Shri Goenka Shailesh S.	Shri Goenka Neeraj S.
Shri Gupta Nandkishore H.	Shri Gupta Rajendraprasad M.	Shri Kela Yash P.
Shri Khemka Jagdish Prasad I.	Shri Pansari Alok S.	Shri Pansari Navin S.
Shri Pansari Kapal S.	Shri Podaar Rahul V.	Shri Rajpuria Nikhil K.
Shri Ruia Ramniranjan N.	Shri Rungta Ajay J.	Shri Saraf Arun P.
Shri Saraf Lalit S.	Shri Thacker Sujay J.	

## Donor Managing Committee Members

Shri Dalmia Sharad S.	Shri Jain Kapal K.	Shri Kabra Pradeep S.
Shri Lath Sanjay D.	Shri Saboo Arun S.	

Note: Names appearing above are printed in alphabetical order of surname and within a family names are printed as per seniority

## Chairman Message



Ashok M. Saraf

Dear Students,

Welcome to the campus of Rajasthani Sammelan Education Trust in the new academic year of 2024-2025.

Affiliated to Mumbai University, Ladhidevi Ramdhar Maheshwari Night College of Commerce was started in the year 2014. The main objective of starting the college has been to bring those working students in the main stream of education who were deprived of higher education due to their personal problems. Hence, young boys and girls working in the day time can join the night college and there by enhance their educational qualifications leading to their career growth.

Ladhidevi Ramdhar Maheshwari Night College of Commerce was started as an undergraduate college of commerce. However from the academic year 2020-2021, the college has received permission from Mumbai University and state government to teach M.Com with specialization in Accountancy. We offer you a state of the art infrastructure in our centrally located RSET campus. Other facilities include well-equipped computer laboratories, spacious classrooms, air-conditioned auditorium, modernized library well stocked with books, journals magazines and newspapers, gymkhana, canteen and various sports facilities for all round development of your personality. We are also providing

online education to you to support the regular classroom teaching.

The college has a strong team of meticulously trained, dedicated and committed faculty and staff. We aim to provide sufficient opportunities to our students to discover and understand themselves to face and overcome challenges presented to them. The cultural activities, outreach programmes through NSS and DLLE units, sports tournaments, inter-collegiate festival, seminars and guest lectures are part and parcel of the academic calendar. We also have sports facilities at Pravinchandra D. Shah Sports Academy in the campus.

I assure you of a great learning experience and our continuous support as you complete your studies from this institution. I wish you all the best for your future endeavours.

“  
**Education is one thing no  
one can take away from you.**

**- Elin Nordegren**

## Members of Governing council

Name	Designation
Shri. Ashok Saraf	Chairman
Shri. Banwarilal Jhunjhunwala	Vice-Chairman
Shri. Kailash Kejriwal	Secretary
Shri. Sunil S. Kabra	Member
Shri. Rajaram Chandgotia	Member
Shri. Vinay S. Saraf	Member
Smt.Poonam P. Maheshwari	Member
Ms. Nishita Mantry	Member
Shri. Akhilesh Lakhotia	Member
Smt. Nikita Lakhotia	Member
Shri. Arun P. Saraf	Member
Dr. Shripad Joshi	Principal, Ex-Officio
Prof. Bhavana Vaidya	Administrator
Dr. Jayant Apte	Director of Education, GSCC
Capt. Anant Yadnik	Staff
Dr. Sunanda Kar	Educational Director
Shri. Kamal Bhagtani	Director, Branding & Fund Raising
Shri. Vikas Ahuja	Head Marketing



## Principal Message



Dr. Shripad H. Joshi

Dear Students,

RSET's Ladhidevi Ramdhar Maheshwari Night College of Commerce, established in 2014 is a landmark for all students including those who work during the day and study in the Night college to pursue their degree. Over one thousand students are pursuing B.Com and M.Com in this institution.

It is with proud privilege that I would like to inform all the concerned stakeholders that our institution secured "B" Grade in its first cycle itself of NAAC Assessment which happened in the previous academic year of 2023-24. All this has happened because of the incessant efforts of our qualified teaching staff, non-teaching staff, students and the management, it is because of the constant support and guidance of the management that we as an institution could achieve this feat. We as an institution try to stick to our motto which is "Enlightening Future". This is achieved through continuous evaluation. The second and most important factor which plays an important role in the success of any institution is the Discipline. As far as discipline is concerned the institution follows Zero-Tolerance policy towards incidences of Indiscipline. Strictest action is and will continue to be taken against such students.

The institution believes in the shaping of overall personality of its students. To enable the same, it continuously encourages the students to participate and get actively involved

in various intra-collegiate and inter-collegiate events. Various associations like National Service Scheme (NSS), Department of Lifelong Learning and Extension (DLLE), Cultural Association and Sports Association work in this direction. The college has a Career Counseling Cell which provides employment opportunities to students so that they become ready to face the competitive world. Safety and Security is the utmost priority of Women Development Cell in particular and institution in general. Sports facilities at P.D. Shah Sports Academy will help you to excel in various sports events. We have excellent infrastructure which includes a spacious auditorium, cafeteria, health centre and high speed computer lab. Our college library provides various collection of books, journals, periodicals and magazines. It provides OPAC (Online Public Access Catalogue) facility for online searching and reservation of books. We have 'Book Bank Scheme' for needy students and 'Scholar Book Bank Scheme' for Academic toppers. The institution provides scholarships and freeships to meritorious and needy students.



**The whole purpose of education is to turn mirrors into windows..** - Sydney J. Harris

## Administrator Message



Prof. Bhavana Vaidya

Dear Students,

Welcome to Ladhidevi Ramdhar Maheshwari Night College of Commerce. Established by Rajasthani Sammelan Education Trust (RSET) in 2014, the college offers the B.Com as well as M.Com programmes for students. RSET institutions have always aimed at a holistic, forward-looking and dynamic approach towards education and LPMC is no exception. Our high teaching standards, excellent infrastructure, our varied curricular and extra-curricular activities all combine to create a campus where a student can find the best possible opportunities for all-round development.

Obtaining of "B" grade with a CGPA of 2.15 in its very first cycle of NAAC Assessment in the Academic year 2023-24 speaks volume about its continuous journey towards achievement of its motto "Enlightening Future." In its initial years it was an institution which offered only Under-Graduate course of B.Com but from the academic year 2021-22 it started M.Com (Advanced Accounting Programme) With this, LPMC is now a college which offers both under-graduate and post-graduate degrees in Commerce which was one of the many goals it had set for itself to achieve since its establishment a decade back. Students with day-jobs who wish to do post-graduation will find LPMC the perfect answer to their needs. The Covid pandemic posed several challenges in the way we teach and learn. Online classes and examinations are

things we have learnt to manage, teachers and students alike. However, at LPMC we have ensured that all academic activities are conducted regularly and consistently. Our well-equipped library has several e-resources available to staff-members and students who can access learning materials without leaving their homes. Apart from academics, efforts are made to conduct extra-curricular and extension activities involving maximum number of students. Learning does not stop or falter at LPMC, despite challenges like Covid.

We are confident that with our commitment to quality education, LPMC will continue to reach more new milestones in its march towards excellence. I welcome you, dear students and invite you to join us on this rewarding journey !



**An investment in knowledge  
pays the best interest.**

**- Benjamin Franklin**



## Rajasthani Sammelan Education Trust - RSET

Rajasthani Sammelan Education Trust, a registered public charitable trust was established in the year 1948 at Malad, Mumbai. With an aim to promote various educational, charitable and social activities, the trust has pioneered in providing educational opportunities to various sections of society. During the last six decades and more, the Trust has played a very vital role in promoting and providing better education from primary to post graduation in the fields of Commerce, Management, Information Technology and Media Studies. Apart from its educational pursuits, Rajasthani Sammelan Education Trust also caters to the social and humanitarian needs of the community.

Rajasthani Sammelan Education Trust had started its educational activities for girls, but in due course of time, it has opened its doors to boys as well. At present, more than 16,000 students are receiving education in various educational institutions run by the Trust. Thousands of students beyond the boundaries of the campus are enrolled with Kunjbihari S. Goyal Online Academy (GOLD).

### **The Educational Institutions owned and run by Rajasthani Sammelan Education Trust are :**

- Kudilal Govindram Seksaria Sarvodaya School
- Kudilal Govindram Seksaria English School
- Ramniwas Bajaj English High School
- Mainadevi Bajaj International School
- Mainadevi Bajaj International Playschool
- Durgadevi Saraf Junior College
- Ghanshyamdas Saraf College of Arts & Commerce
- Kirandevi Saraf Institute of Complete Learning
- Durgadevi Saraf Institute of Management Studies
- Durgadevi Saraf Global Business School
- Deviprasad Goenka Management College of Media Studies
- Ladhidevi Ramdhar Maheshwari Night College of Commerce
- Kunjbihari S. Goyal Online Academy
- Nalini Shah Music Academy

### **Other organizations owned and managed by Rajasthani Sammelan Education Trust include:**

- Draupadidevi Sanwarmal Women's Hostel
- Ramdhar Maheshwari Career Counseling Centre
- Pravinchandra D. Shah Sports Academy
- Jankidevi Bilasrai Bubna Boys' Hostel

### **Rajasthani Sammelan Education Trust is also providing many other facilities in its educational campus that include:**

- Dhurmaj Bajaj Bhavan (Community Hall)
- Durgadevi Saraf Hall

- IT Hub
- Food Court
- Ramnarayan Saraf Educational Outlet
- RS CA Study Centre
- IRB Endowment Scholarship Fund
- Vijay Pal Singh Health Centre
- Kirandevi Saraf Library and Reading Room
- BKT Endowment Freeship Fund
- Jankidevi Bilasrai Bubna Endowment Freeship Fund
- Sharda Cropchem Bloomberg Lab
- Lalchand Dalmia Golf Cart

The Trust is providing financial assistance to needy persons for medical treatment through Trivenidevi Deora Chikitsa Sahayta Kosh. Scholarships are also provided to needy students to complete their education.



## About the College

LadhideviRamdharMaheshwari Night College of Commerce established in 2014, which falls under the aegis of RajasthaniSammelan Education Trust provides degree education in Bachelor of Commerce (B.Com) and is affiliated to the University of Mumbai.

The institute is the best option for all the students who work during daytime. The college believes in paying individual attention to the educational needs of the students. The focus area of all the activities conducted is the personality development of a learner.

Our highly qualified teachers guide our learners in all their endeavors.

### Our Commitments:

- Investing in good people and good infrastructure
- Ensuring consistent human enrichment and development
- Evolving a healthy work culture and team spirit
- Instilling a sense of pride and belonging to the institution
- Setting higher and newer goals in the pursuit of excellence

**The college is located in RSET Campus on S.V. Road, near Sunder Nagar, Malad (W), Mumbai – 64. and has the following infrastructure.**

- Spacious Canteen
- Learner's Common Room
- Communication Centre
- Cyber Zone with high-speed computers
- Well-equipped and Spacious Library
- Media Lab
- Durgadevi Saraf Auditorium with 300-seating capacity
- Pravinchandra D. Shah Sports Academy
- Vijay Pal Singh Health Centre

### Highlights of our College

- Cultural Association which conducts Intra-Collegiate Competitions in Singing, Elocution, On the Spot Painting, Essay Writing and Rangoli. Teachers' Day is also celebrated with great enthusiasm every year.
- Inter-Collegiate Festival PANKH – A Desire to Fly is also a popular activity of the Cultural Association.
- Extension and Extra-Curricular Activities- NSS, DLLE, WDC.

A. **NSS** – Blood Donation Drive, Residential Camp, Cleanliness Campaigns, Tree Plantation, Yoga Day Celebration, Rallies are the activities conducted by the National Service Scheme.

B. **DLLE**- The learners participate in UDAAN -University festival, Training program with field co-ordinators, Best out of Waste Competitions.

C. **WDC** – Programs on Women Empowerment and Health and Hygiene

Career Counselling Cell – Guidance from renowned institutes about Career and Competitive Exams.

Gold Academy E-learning Facility – Provides absolutely free online content to anyone located anywhere, anytime.



## List of Teaching Staff

FACULTY	QUALIFICATIONS	DEPARTMENT
Dr. Shripad Joshi	M.Com, M.A. MH-Set, Ph.D	Commerce
Asst.Prof.Dr. Suryabhushan Mishra	M.Com, Ph.D	Accountancy
Asst.Prof. Shweta Chawda	M.Com	Accountancy
Asst.Prof. Manoj Mishra	M.Com	Business Law
Asst.Prof. Jitendra Gupta	M.Com, M.Phil, PGDFM, UGC-NET	Commerce
Asst.Prof. Sandhya Shrivastav	M.Com, UGC-NET	Commerce
Asst.Prof. Siddharth Apte	MA(CJ), MH-SET	Business Communication
Asst.Prof. Neelam Maurya	M.Com, B.Ed	Business Economics
Asst.Prof. Sangeeta Jalui	M.Com,MA	Business Economics
Asst.Prof. Chandrabhushan Yadav	M.Sc	Mathematics and Statistical Techniques
Asst.Prof. Chandrabhan Prajapati	M.A.	Environmental Studies
Asst.Prof. Ankit Bandal	M.Com, MH-NET	Accountancy
Mr. Harish Paralkar	M. Com, M.PEd and B.PEd	Sports Instructure
Mr. Vishal Deodhar	MLISc and MA	Librarian

NAME OF STAFF	DESIGNATION
Mrs. Nilima Sawant	Jr. Clerk
Mrs. Sneha Koli	Jr. Clerk
Mr. Shubham Chavan	Jr. Clerk
Mr. Sandesh Dhawale	Peon
Mr. Nilesh Hule	Peon



## Trophies

Trophies Donated By	For the Event
Shri. Ramdhar Maheshwari Trophy donated by Ramdhar Maheshwari Foundation	Bahar LRMC (Male)
Matoshree Ladhidevi Ramdhar Maeshwari Trophy donated by Ramdhar Maheshwari Foundation	Bahar LRMC (Female)
Shri. Kailash Parasrampurua Trophy donated by Shri Kailash Parasrampurua	Singing Competition (Male)
Shri. Kailash Parasrampurua Trophy donated by Shri Kailash Parasrampurua	Singing Competition (Female)
Smt. Sarabatibai M. Deora Trophy donated by Shri. Suresh Deora	Painting Competition
Smt. Sarabatibai M. Deora Trophy donated by Shri. Suresh Deora	Rangoli Competition
Late Shri Satyanarayan Kabra Trophy donated by Sunil Kabra	Elocution Competition
Shri. Shyamlal Bhadech Trophy donated by Shri Kailash Kejriwal	Quiz Competition
Smt. Sushila Pradeep Kabra Trophy donated by Shri. Sunil Kabra	Essay Writing
Shri Madhusudan Maheshwari Trophy donated by Shri Madhusudan Maheshwari	Best Student Volunteer (NSS)
Shri. Prahladrai Shivdeo Saraf Trophy donated by Shri Arun P. Saraf	Best Student Volunteer (DLLE)
Smt. Chandrakaladevi Prahladrai Saraf Trophy donated by Shri Arun P. Saraf	Talent of the Year (Male)
Shri. Lalchand Dalmia Trophy donated by Shri. Vinod L Dalmia	Talent of the Year (Female)
Smt. Trivenidevi Shyamlal Bhadech Trophy donated by Shri Kailash Kejriwal	Student of the Year
Smt. Ladhidevi Ramdhar Maheshwari Trophy donated by Vedant Foundation	Academic Topper (1st Ranker), 3rd Semester Examination
Shri Madangopal Ramdhar Maheshwari Trophy donated by Ramdhar Maheshwari Foundation	Academic Topper (2nd Ranker), 3rd Semester Examination
Shri Ramdhar Chhotelal Maheshwari Trophy donated by Shri Balkrishna Lakhota	Academic Topper (1st Ranker), 2nd Semester Examination



## Associations

The various departments came into being to chalk out co-curricular activities and to involve the students in the endeavour of fulfilling the motto of Enlightening Future.

- Internal Quality Assurance Cell (IQAC)
- Cultural Association
- Department of Lifelong Learning and Extension (DLLE) (\*Entitled for Additional 10 Marks)
- National Service Scheme (NSS) (\*Entitled for Additional 10 Marks)
- Sports Association
- Students Council (Constituted as per University Norms)
- Career Counselling Cell
- Women's Development Cell (WDC)



## College Office

1. The Office is located on the Sixth floor of the college building.
2. The regular office timings are from 12:30 p.m. to 7:30 p.m. – Mondays to Saturdays
3. All payments are accepted from 12:30 p.m. to 2:30p.m. except on Saturdays.
4. Courtesy is appreciated and will be reciprocated.

## Library

The college has a spacious Library recently renovated and named after Shri. Vallabh. G. Saraf Knowledge Resource Centre on the Fifth Floor of the College building. It is a pleasant reading place for students and teachers. It houses a valuable collection of books, journals, periodicals and reference books. It provides OPAC (Online Public Access Catalogue) facility for online searching and reservation of books. The library also has separate "Research Cell" for teachers for the research work. Daily newspapers, magazines, journals and books of general interest are also kept in the library for teachers and students. The library has around 500 CDs and more than 30 Classic DVDs of award winning movies which can be accessed by teachers and students. The library remains open on all working days from 12.00 p.m. to 8 p.m. on all working days. The library has an institutional membership of British Council Library and the American library, Mumbai. We have inter-library loan (ILL) facility for Students and Staff within RSET libraries. We have academic scholar schemes for toppers, who receive full set of text books for the academic year.



## Rules & Regulations

- A. Every student must have a valid College Library Card which must be produced as and when demanded by the library staff.
- B. Students must handle the books or periodicals etc with great care. Any attempt to damage books or
- C. periodicals by defacing or tearing the pages will be treated as misconduct and will be dealt with strictly.
- D. Identity Card and Library Cards are non-transferable.
- E. If the original Identity Card or Library Card is lost, a duplicate will be issued on payment of Rs. 50/-

### Home Issue

- A. Two books are issued to a student for a week.
- B. In case of late return of books, students will have to pay a fine at the rate of Rs. 2/- per day. While charging fine, holidays
- C. will be counted and no exemption will be granted in any case.
- D. All cases of disregard of these rules will be reported to the principal for appropriate action.

### A. Library Services

- News Paper Clipping Service
- Current Awareness Service
- Reference Service
- Book Bank
- Indexing Service through OPAC
- Inter Library Loan Facility
- Book Reservation

The college has a book bank scheme for needy students. Interested students may contact the Librarian for the same and avail the facility.

**Internet Facility: Free internet service is made available for students and staff.**

## Allowed to Keep Terms (ATKT):

1. A student shall be allowed to keep terms for Semester II irrespective of courses of failure in the \ Semester I.
2. A student shall be allowed to keep terms for Semester III if he/she passes each of Semester I and Semester II.

OR

A student fails in not more than two courses of Semester I and Semester II taken together.

3. A student shall be allowed to keep terms for Semester IV irrespective of number of courses of failure in Semester III. However, the student has to pass each of Semester I and Semester II in order to appear for Semester IV.
4. A student shall be allowed to keep term for Semester V if he/she passes Semester I, Semester II, Semester III and Semester IV.

OR

A student shall pass Semester I and Semester II and fails in not more than two courses of Semester III & Semester IV taken together.

5. A student shall be allowed to keep term for Semester VI examination irrespective of number of courses of failure in Semester V.
6. The student can appear for the Semester VI examination but the result of Semester VI shall be kept in abeyance until the student passes each of Semester I, Semester II, Semester III, Semester IV & Semester V.

## General Instructions for Admission Procedure

Admissions will be conducted as per the guidelines and schedule announced by the University of Mumbai. The schedule of the admission will be displayed on the Notice Board when it is received from the University.

### Documents Required

- Original marksheet of standard 12th exam along with two photocopies of the same.
- Two photocopies of standard 10th Marksheet.
- Original Leaving Certificate along with two copies of the same.
- Three recent passport sized photographs.
- Students belonging to Boards other than Maharashtra State must apply for Provisional Eligibility.
- Aadhar Card

### Fee-structure for Three year Commerce Course:

The FEES STRUCTURE is as per the University of Mumbai guidelines. Students belonging to Reserved Category (SC/ST/OBC/SBC/VJNT/DTNT) have to furnish relevant and prescribed proof (caste certificate, income certificate etc.) to avail Scholarships/Freeships, as per the Government rules.

Please refer to <http://mahaeschol.maharashtra.gov.in> for further details.

### Refund of Fees:

Refund of fees will be as per Ordinance 0.2859 relating to refund of funds, as amended vide University of Mumbai Circular No. UG/412 of 2008 dated 11-09-2008.



## Documents Required:

### For Students from Maharashtra Board -

1. Original Mark-sheet of HSC + 2 photocopies (front & Back)
2. Original Leaving Certificate of 12th Standard + 1 photocopy
3. Two photocopies of 10th Standard Mark-sheet

### For Students from other than Maharashtra Board – In addition to above, following documents are required:

4. Additional 2 photocopies of Mark-sheet dully attested
5. Original Transference certificate + 2 photocopies dully attested
6. Original Migration Certificate + 2 photocopies dully attested

### For Students from Foreign Universities/ Boards – In addition to above, following documents are required:

7. Candidates passing Class XII Examinations from Foreign Boards and students passing from International Baccalaureate or 'A' levels examinations- General Certificate of Education/Cambridge International School Exam of Cambridge or University of London must first obtain a 'PRIMA FACIE' Eligibility Letter from the University of Mumbai for the purpose of admissions.
8. Provisional Eligibility Certificate issued by the University + 2 photocopies dully attested.
9. University + 2 photocopies dully attested.
10. 4 attested copies of Foreign Passport
11. 4 attested copies of VISA

### For Students belonging to Reserved Categories : In addition to Maharashtra Board students documents –

12. Caste certificate in the name of students + 2 photocopies dully attested
13. Salary Certificate / Declaration of income of family from Tahsildar + 2 photocopies dully attested
14. Ration card + 2 photocopies dully attested
15. Aadhar Card + 2 photocopies dully attested

### For students of Handicapped / Ex-service men / Widow etc –

16. Reservation as per Government and University Rules
17. Relevant documents to be submitted at the time of admission

### Fees Structure: Under Graduate Courses

As per University Circular No. CONCOL / FEE / 292 of 2008 dated 07 /07 / 2008 (IInd ammendment), circular no. Exam

Fee / 149 of 2012-13 dated 19 /03 / 2013 & Krida / 04 March / 2014, V.K / Bha. Sa. Shi / Degree / 2 / 2013 dated 7 / 06 / 2013 & no. Krida Samiti / 18 dated 6 / 8 / 2014, circular no. UG / 253 of 2016 - 17 dtd 7 / 3 / 2017, 000000 / 0000 / 000000 - 00 dated 1 / 08 / 2017, 0000. 0. 0. / 0 / 0000-00 dated 10 / 04 / 2012 and No. Exam. / Fees / 15 / 2018 dated 31. 01. 2018.

### Concession of Fees :

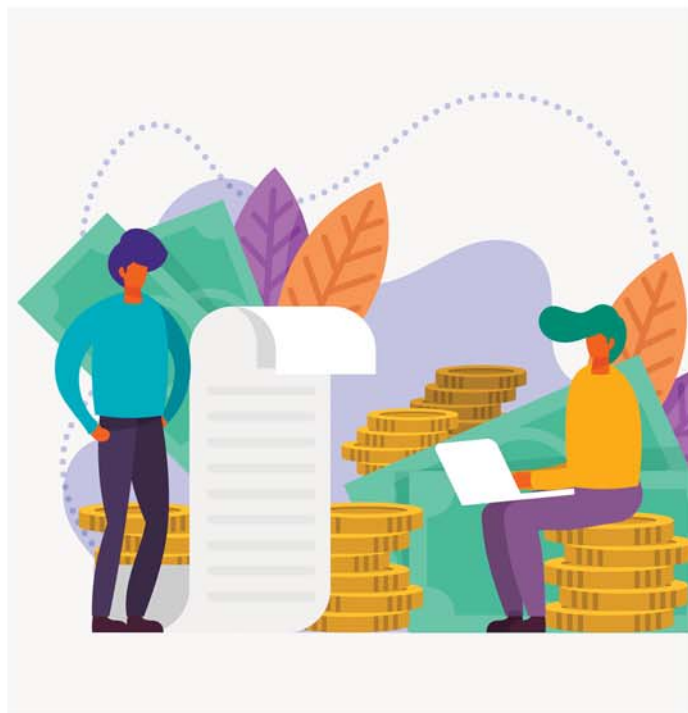
Students belonging to reserved category (SC/ ST/ DT/ NT/ OBC /SBC) are entitled to get fee concession, provided they have submitted necessary relevant documents at the time of admission.

### Cancellation Policy :

18. Refund of fees will be as per University guidelines vide circular No. UG/412 OF 2008 ordinance relating to the refund of fees.
19. Students who wish to cancel their admission should fill the admission cancellation form available in the office/ admission desk
20. Submit dully filled and signed application form alongwith original Fees receipt issued by the college
21. Bank details (crossed cheque/photocopy of pass book) or NEFT details for refund of fees after deducting admission cancellation charges.

### Refundable Deposits:

Students have to apply for refund of deposits within one year after completion of their course in the prescribed form available in the college office. Original fees receipt must be produced / attached while applying for the same.





## Gold Academy

Kunjbihari S. Goyal Online Academy of Learning and Development (GOLD Academy) has the vision of providing absolutely free online learning content to anyone located anywhere anytime. At present 43350 students have already been registered and enrolled for F.Y,S.Y & T.Y. B.Com Courses in GOLD E- Learning Management System (IMS). GOLD Academy has uploaded MCQ's type online assessment test for all the students. GOLD Academy's team is regularly providing training and awareness to all the students, staff of the college on E-Learning contents so that students can get maximum benefit to prepare for their academics & exams.



## Online Teaching - Learning



During this pandemic situation the entire Teaching-learning process has undergone complete change. Adapting to the new ways of teaching, we are going use Google Meet and Google Classroom on which faculty can upload their E-Content, set-up Quiz, Assignments. Grading can also be done through Google Classroom. Students can communicate with teachers like they used to in normal scenarios. This will help in empowering students through technology driven Teaching-learning.



## Scholarship & Freeship



**IRB**  
scholarship endowment fund  
HONOURING EXCELLENCE

IRB Scholarship for two students each (one male and one female) from B.Com and Self-Finance will be given for academic excellence and all round performance

The scholars will be selected by a panel of faculty from Ghanshyamdas Saraf College and recommended to the IRB Scholarship Endowment Fund Committee and the Trustees of the Rajasthani Sammelan for final decision.



**BKT**  
freeship endeavour fund  
FOSTERING KNOWLEDGE

BKT Freeship will be given to those students who cannot afford education due to lack of funds. This will provide opportunity to many deserving students to obtain suitable education of their choice and there by make progress in their life by becoming properly qualified.

The Freeships will be decided by the BKT Endowment Fund Committee and forwarded to the Trustees of Rajasthani Sammelan for final decision.



**Jankidevi Bilasrai Bubna**  
endowment freeship fund  
EMBOLDENING STRENGTHS

Jankidevi Bilasrai Bubna Endowment Freeship Fund gives freeship to the needy and deserving students studying in various educational institutes of RSET. The freeship fund gives the much needed financial support to such students who do not have the financial means to pursue their education.

The recipients of freeship will be decided by Smt. Jankidevi Bilasrai Bubna Endowment Freeship Fund Committee of Rajasthani Sammelan Education Trust.



Shri Vipul Shah along with Shri Ashok M Saraf awarding scholarship cheque and certificate to Mr. Aryan Narayan Shankar



Smt. Sharda Bubna along with Shri Kailash Kejriwal awarding scholarship cheque and certificate to Mr. Ajay Ramchandra Sable



Smt. Sharda Bubna along with Shri Kailash Kejriwal awarding scholarship cheque and certificate to Ms. Haseena Sayyed

## Code of Conduct and College Regulations

1. Students joining the college are strictly bound by the rules and regulations of the college.
2. Every student must obtain on admission, and wear hi/her identity card with latest photograph duly attested.
3. Attendance at lectures and tutorials is mandatory. Attendance of students is regulated by Ordinances 119, 119-A and 120 which states that – “for granting of terms, attendance of 75% of theory, practical's and tutorials conducted in the term.” Students who do not fulfil the requirements of the minimum attendance of 75% due to medical reasons or circumstances beyond their control are required to submit their valid explanation with documentary evidence to the Head of the Institute for condoning the deficiency. Decision of the Principal for condonation will be final.
4. In case of illness, a student must apply for leave, with doctor's certificate. He/She must personally report to the Prof. In- Charge / Vice-Principal on resuming classes.
5. Students must not loiter on the college premises while the classes are going on.
6. Students shall not do anything either inside or outside the college that will in any way interfere with its orderly conduct and discipline.
7. No society or Association can be formed in the college and no person can be invited to address a meeting without the principal's prior permission and sanction.
8. No student shall collect any money or contributions for picnic, trip, educational visit to any place, get-togethers, study-notes, charity or any other activity without prior sanction of the Principal.
9. Students are expected to take proper care of college property and to help in keeping the premises neat and clean. Causing damage to the property of the College e.g., disfigured walls, doors, fittings, or breaking furniture etc., is a breach of discipline and the guilty will be duly punished.
10. Students should not leave their books, valuables and other belongings in the classroom or any other place in the college.
11. The college is not responsible for lost property. However, students must contact college office regarding the same.
12. Students applying for certificates, testimonials etc. and those requiring the Principal's signature on any kinds of documents or applications should first contact the Office Superintendent. Students should not bring any paper directly to the Principal for signature.
13. If, for any reason, the continuance of the student in the College, is, in the opinion of the Principal, detrimental to the best interest of the College, the Principal may ask such a student to leave the college.
14. Insubordination and unbecoming language or misconduct on the part of the student are sufficient reasons for his/her suspension or dismissal from the college.
15. Students receiving Government or College Scholarships or any remission in fees, must note that the grant and continuance there of are subject to their good behaviour, regular attendance and satisfactory academic performance at College and University Examinations.
16. All college activities must be organised under the guidance and supervision of the Principal and Professor In-Charge with prior permission only.
17. Students must not associate themselves with any activity not authorised by the College Principal. Serious view will be taken of students found organizing or participating in such unauthorized activities.
18. Students using unfair means at examinations will be dealt with strictly in accordance with University rules.
19. It is the responsibility of the students to read notice-boards regularly for important announcements made by the College authorities from time to time. They will not be excused Or be given any concession on grounds of ignorance.
20. Use of Cell phones is banned inside classroom, college office and library.
21. Students are prohibited from using college name for any private or individual event. Violation may lead to permanently debarring such students from the college.
22. Ragging is strictly prohibited in higher educational institutions, as per the directions of Hon'ble Supreme Court and University
23. Grants Commission has made provision of 6.1 (o) of the UGC regulations, 2009. Students involved in any form of ragging will be severely punished.
24. Matters not covered under the existing rules will rest at the absolute discretion of the Principal.



## Programme: Bachelor of Commerce (B.Com)

### First Year SEMESTER I

- 1 Introduction to Business
- 2 Business Economics Paper –I
- 3 Accountancy and Financial Management Paper –I
- 4 Foundation Course Paper –I
- 5 Mathematical and Statistical Techniques – I
- 6 Business Communication –I
- 7 Environmental Studies – I

### First Year SEMESTER II

- 1 Introduction to Service Sector
- 2 Business Economics Paper –II
- 3 Accountancy and Financial Management Paper –II
- 4 Foundation Course Paper –II
- 5 Mathematical and Statistical Techniques – II
- 6 Business Communication –II
- 7 Environmental Studies – II

### Second Year SEMESTER III

- 1 Commerce –III
- 2 Business Economics Paper –III
- 3 Accountancy and Financial Management Paper -III
- 4 Foundation Course Paper –III
- 5 Business Law-I
- 6 Advertising –I
- 7 Introduction to Management Accounting

### Second Year SEMESTER IV

- 1 Commerce –IV
- 2 Business Economics Paper –IV
- 3 Accountancy and Financial Management Paper -IV
- 4 Foundation Course Paper –IV
- 5 Business Law-II
- 6 Advertising –II
- 7 Introduction to Auditing



## Programme: Bachelor of Commerce (B.Com)

### Third Year SEMESTER V

- 1 MHRM-I
- 2 Business Economics Paper –V
- 3 Direct and Indirect Taxes-I
- 4 Financial Accounting & Auditing VII – Financial Accounting
- 5 Financial Accounting and Auditing VIII – Cost Accounting
- 6 Applied Component (Any one)
- 7 Export Marketing I
- 8 Computer Systems and Applications I

### Third Year SEMESTER VI

- 1 MHRM-II
- 2 Business Economics Paper –VI
- 3 Direct and Indirect Taxes-II
- 4 Financial Accounting & Auditing IX – Financial Accounting
- 5 Financial Accounting & Auditing X – Cost Accounting
- 6 Applied Component (Any one)
- 7 Export Marketing II
- 8 Computer Systems and Applications II



## Programme: Master of Commerce (B.Com)

Semester I - Core Courses		Credits
1	Strategic Management	6
2	Economic for Business Decisions	6
3	Cost and Management Accounting	6
4	Business Ethics & Corporate Social Responsibility	6
Total Credits		24

Semester II - Core Courses		Credits
1	Research Methodology for Business	6
2	Macro Economic Concepts and Applications	6
3	Corporate Finance	6
4	E-Commerce	6
Total Credits		24

Semester III - Elective Courses		Credits
1	"Any one group of courses from the following list of course (Group A) "	18
2	Project Work	
3	Project Work -I	6
Total Credits		24

Semester III - Elective Courses		Credits
1	"Any one group of courses from the following list of course (Group A) "	18
2	Project Work	
3	Project Work -I	6
Total Credits		24

## Advanced Accounting, Corporate Accounting & Financial Management

Semester III - Elective Courses		Credits
1	Advanced Financial Accounting	06
2	Direct Tax	06
3	Advanced Cost Accounting	6
Total Credits		24

Semester III - Elective Courses		Credits
1	Corporate Financial Accounting	06
2	Indirect Tax Introduction of Goods and Service Tax	06
3	Financial Management	06
Total Credits		24

### Note

Project work is considered as a special course involving application of knowledge in solving / analyzing / exploring a real life situation/difficult problem. Project work would be of 06 credits. A project work may be undertaken in any area of Elective Courses.

### Program Outcome:

For those specializing in accounting, this course focuses on acquiring students with the accounting concepts, tools and techniques for managerial decisions. While it is a mandatory qualification required for appearing in specific professional exams it is also a gateway to higher studies and research or doctorate level

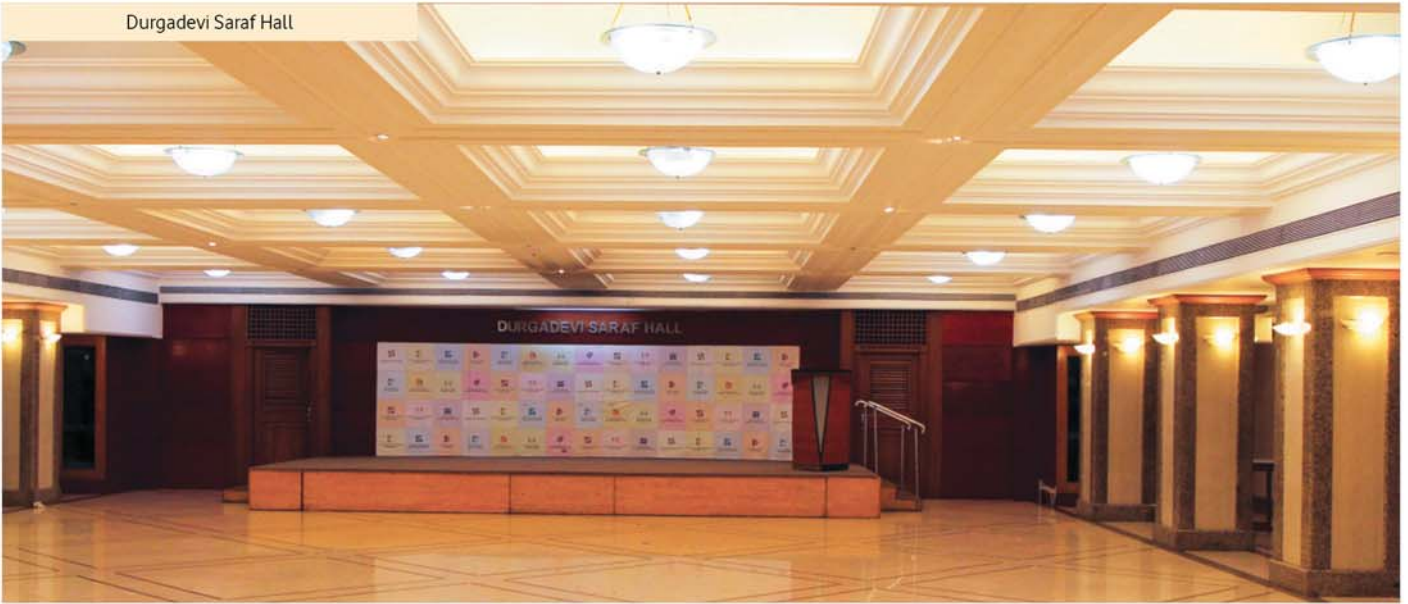
### Programme Specific Outcome

It aims at imparting basic understanding of the research methodology to provide an insight into the application of modern analytical tools and techniques in various aspects of business.



# Campus

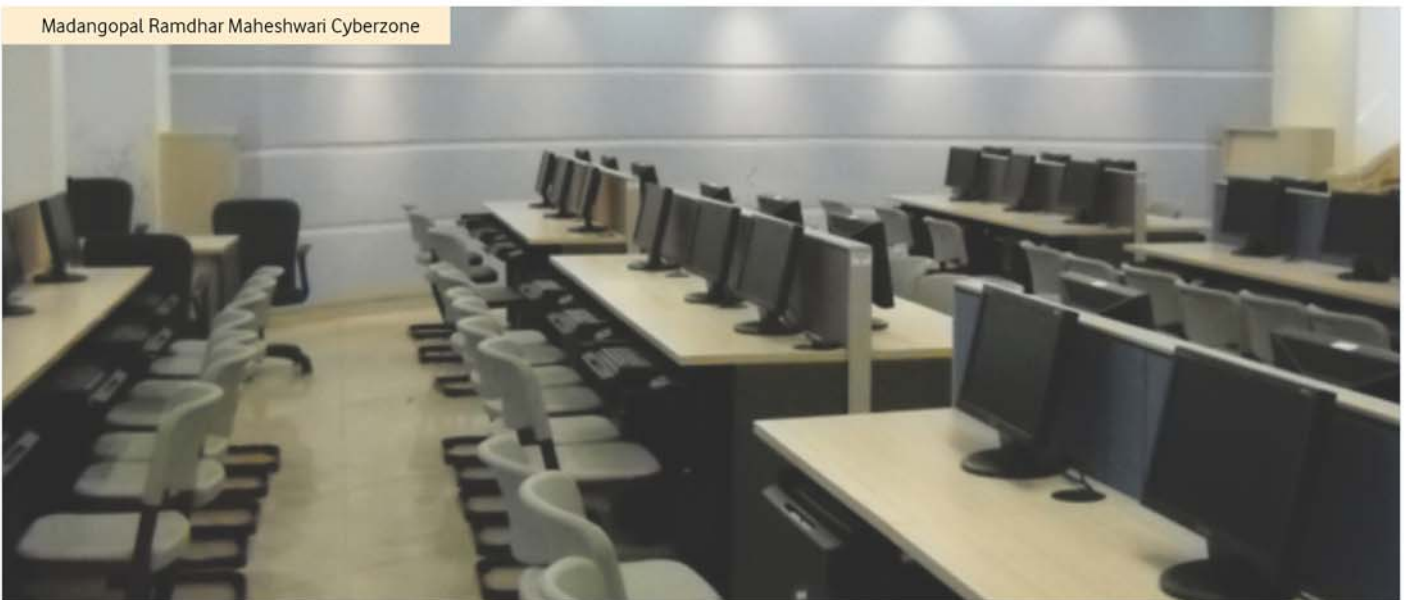
Durgadevi Saraf Hall



Ramnarayan Saraf Educational Outlet



Madangopal Ramdhar Maheshwari Cyberzone



## Campus

Kirandevi Saraf Learning Centre



Shrivallabh G Saraf Knowledge Resource Centre



Pravinchandra D. Shah Sports Academy





## Draupadidevi Sanwarmal Womens' Hostel

Draupadidevi Sanwarmal Women's Hostel is housed on the 11th & 12th floor of the educational complex of Rajasthani Sammelan Education Trust. The hostel can accommodate 135 girl students.

The hostel has Triple occupancy AC and non AC rooms on both the floors. All the rooms have attached toilets, designed in such a way that they can be serviced when the rooms are locked.

Each student in a room is provided with a bed, a writing table, a chair & a common sofa.

The hostel consists of a reception on the ground floor; a recreational area, a dining hall & a dry pantry on the 12th floor. The corridors of the hostel are naturally lit and ventilated by big skylights. Passages have been made colorful to give a lively ambience. Voids are provided between 11th & 12th floors for the students to communicate.

### Fee Structure

Type of Accommodation	Fees for 12 months (July to June)	Security Deposit
Triple Sharing AC Room	₹ 2,41,920	₹ 30,000
Triple Sharing Non AC Room	₹ 1,88,160	₹ 30,000



Recreational Area



Cafeteria



Students Room



Hostel Passage

## Jankidevi Bilasrai Bubna Boys' Hostel

Jankidevi Bilasrai Bubna Boys' Hostel is the latest addition in the educational endeavor of Rajasthani Sammelan Education Trust. The Hostel is located at a walking distance from RSET Campus. The independent Hostel building has seven floors and provides accommodation for 152 students. All rooms are air-conditioned and aesthetically designed. There are air conditioned study areas on all floors where the students can sit and study. Also, all the floors have a lounge and TV room for the recreation of the students. Other facilities include a communication room, dining room and games room. For the safety of the students, the building is equipped with fire detection and fire fighting system. CCTVs are also installed for 24 x 7 security. There is Wi-Fi access to the entire building. The building is maintained by the professional house-keeping agency. For the convenience of the hostel inmates, breakfast & dinner is provided to them.



### Fee Structure

Type of Accommodation	Fees for 12 months (July to June)	Security Deposit
2 Bed Sharing AC	₹ 2,41,920	₹ 30,000
4 Bed Sharing AC	₹ 2,01,600	₹ 30,000



Tv Lounge



Quadruple Sharing Room



Study Area



Cafeteria

## Courses @ RSET

 <p>Kudilal Govindram Seksaria <b>sarvodaya school</b> INSPIRE, INVENT, INITIATE</p> <p>Established in 1959</p>	<p>The school is authorised by the Maharashtra State Board of Education to offer SSC syllabus &amp; the medium of instruction is Hindi.</p>	 <p><b>KGSS</b> www.kgss.org.in</p>
 <p>Kudilal Govindram Seksaria <b>english school</b> INSPIRE, INVENT, INITIATE</p> <p>Established in 2010</p>	<p>The School is authorised by the Maharashtra State Board of Education to offer SSC syllabus &amp; the medium of instruction is English.</p>	 <p><b>KGES</b> www.kges.org.in</p>
 <p>Ramiwas Bajaj <b>english high school</b> UNLEASH YOUR POTENTIAL</p> <p>Established in 1985</p>	<p>The School is affiliated to the Council for the Indian School Certificate Examinations and follows the ICSE curriculum from Nursery to Std.X.</p>	 <p><b>RBHS</b> www.rbhs.org.in</p>
 <p>Mainadevi Bajaj <b>international school</b> GIVING WINGS TO YOUR DREAMS</p> <p>Established in 2009</p>	<p>Authorised - Cambridge Primary Programme (CPP) International General Certificate of Secondary Education (IGCSE) Cambridge International AS &amp; A Levels Programme (A Levels)</p>	 <p>Cambridge Assessment International Education Cambridge International School <b>MBIS</b> www.mbis.org.in</p>
 <p>Durgadevi Saraf <b>junior college</b> IN PURSUIT OF EXCELLENCE</p> <p>Established in 1975</p>	<p>The Junior College is authorized by HSC Board of Government of Maharashtra to offer higher secondary courses in arts, commerce &amp; science. College has started Bi-focal in science stream. The students have the option of selecting Computer Science &amp; Electronics as their subjects of choice.</p>	 <p><b>DSJC</b> www.dsjc.org.in</p>
 <p>Ghanshyamdas Saraf <b>college of arts &amp; commerce</b> EDUCATION EMPOWERS</p> <p>Established in 1983</p>	<p>Affiliated to University of Mumbai</p> <p><b>Undergraduate courses:</b> B.Com B.Com (Accounting &amp; Finance) B.Com (Banking &amp; Insurance) B.Com (Financial Markets) BMS, B. Sc IT.</p> <p><b>Post Graduate Courses:</b> M.Com (Accountancy) M.Com (Business Management)</p> <p><b>Ph.D. Programs</b> Ph.D. in Commerce Ph.D. in Economics</p>	 <p><b>GSCC</b> www.sarafcollege.org</p>
 <p>Kirandevi Saraf <b>institute of complete learning</b> WIDENING HORIZONS</p> <p>Established in 2005</p>	<p><b>University / Institute</b> Tilak Maharashtra University Phasor Education Pvt. Ltd. Financial Planning Standards Board KIIMS ICSI</p> <p><b>Courses</b> BCA, BBA JEE Mains / NEET / SSC / MBA MH-CET Certified Financial Planner Fashion Designing and Interior Designing CS Program</p>	 <p><b>KSIL</b> www.ksil.org.in</p>
 <p>Durgadevi Saraf <b>institute of management studies</b> WE CREATE LEADERS</p> <p>Established in 2010</p>	<p><b>University &amp; AICTE Approved Program:</b> • Two years full-time Master in Management Studies (MMS)</p>	 <p><b>DSMS</b> www.dsims.org.in</p>

## Courses @ RSET

 <p>Durgadevi Saraf global business school LEARN AND INSPIRE</p> <p>Established in 2020</p>	<p><b>Two years full time AICTE Approved Post Graduate Diploma in Management (PGDM)</b></p> <p><b>Autonomous Programs</b></p> <ul style="list-style-type: none"> <li>• Global Entrepreneur Program</li> <li>• Family Managed Business Administration</li> <li>• Entrepreneurship Program</li> <li>• Women Entrepreneurship Program</li> <li>• Event Management</li> <li>• Supply Chain Management</li> </ul>	 <p><b>DSGS</b> www.dsgs.org.in</p>
 <p>Deviprasad Goenka management college of media studies INDIA'S PREMIER MEDIA SCHOOL</p> <p>Established in 2010</p>	<p><b>University of Mumbai - Courses:</b></p> <p>MA - Communication and Journalism : (MA-CJ)            MA - Film Television &amp; New Media Production : (MA-FTNMP)            BA - Multimedia &amp; Mass Communication : (BA-MMC)            BA - Film Television &amp; New Media Production : (BA-FTNMP)</p> <p><b>DGMC Autonomous - Courses: Post Graduate Program (PGP)</b></p> <p>a. PGP in Integrated Marketing, Advertising &amp; Communication (IMA&amp;C),            b. PGP in Event Management (EM)            c. PGP in Sports Marketing &amp; Management (SM&amp;M)</p> <p><b>Certificate Courses:</b></p> <p>Audio &amp; Video Editing            Graphic Design            Multimedia &amp; Animation            Digital Communication</p>	  <p><b>DGMC</b> www.dgmc.org.in</p>
 <p>Ladhidevi Ramdhar Maheshwari night college of commerce ENLIGHTENING FUTURE</p> <p>Established in 2014</p>	<p>Rajasthani Sammelan Education Trust is running a Night College in its educational campus by the name of Ladhidevi Ramdhar Maheshwari Night College of Commerce from the academic year 2014-15. The college is affiliated to the University of Mumbai and offers B.Com &amp; M.Com courses. Ladhidevi Ramdhar Maheshwari Night College of Commerce has accommodated students who have passed out from evening section of Durgadevi Saraf Junior College as well as other deserving students from the nearby areas.</p>	 <p><b>LRMC</b> www.lrmc.org.in</p>
 <p>Ramdhar Maheshwari career counseling centre STEERING TO SUCCESS</p> <p>Established in 2011</p>	<ul style="list-style-type: none"> <li>• Career Assessment and Guidance</li> <li>• Professional Consultancy</li> <li>• Personalised Skill building</li> <li>• Learning Difficulty Assessments</li> <li>• Remedial solutions for Academic Difficulty</li> <li>• IQ &amp; Aptitude Assessments</li> <li>• Personal Counseling</li> <li>• Workshops for Teachers, Parent and Students</li> <li>• Study Abroad Counseling</li> <li>• SAT/GRE/GMAT/IELTS/TOEFL Coaching</li> </ul>	 <p><b>RMCC</b> www.rmcc.org.in</p>
 <p>Kunjibihari S. Goyal online academy LEARNING BEYOND BOUNDARIES</p> <p>Established in 2014</p>	<p>Rajasthani Sammelan Education Trust has started an Online Academy to extend educational facilities to a large number of students who are unable to attend regular lectures in a college. At the same time, there are many students who are anxious to study further. Through online academy, lectures of well qualified lecturers will be available on the website and students will be able to study from the convenience of their own home. Besides, the student will be able to view the lecture on the website again and again to clear his/her concept. The online academy will provide lectures of degree and post-graduate courses.</p>	 <p><b>GOLD</b> www.goldelearning.com</p>
 <p>Vishwanath Podar study centre INTELLECTION HUB</p> <p>Established in 2015</p>	<p>Rajasthani Sammelan Education Trust has started Vishwanath Podar Study Centre. In the city like Mumbai there are space constrains in many houses and students often face inconvenience to study in a peaceful atmosphere. This study centre proves to be a boon to many students, as they are able to study in a quite environment. The study centre remains open from morning till late evening for the benefit of students. The ICAI Extension counter has also been opened at the Vishwanath Podar Study Centre for the benefit of its students and members, for submission of various documents and distribution of study material to CA students.</p>	 <p><b>RSCA</b> www.rscsca.org.in</p>
 <p>Mainadevi Bajaj international playschool YOUNG EVOLVING MINDS</p> <p>Established in 2014</p>	<p>Rajasthani Sammelan Education Trust continues with its endeavors in the field of education with its new initiative for Toddlers which is, Mainadevi Bajaj International Playschool. The Trust aims to lay the foundation of learning for tomorrow's Global Citizen. Mainadevi Bajaj International Playschool is the first IPC Accredited Playschool in Mumbai, India and offers a Playgroup and Pre Nursery.</p>	 <p><b>MBIP</b> www.mbip.org.in</p>
 <p>Nalini Shah music academy MUSICAL HARMONY</p> <p>Established in 2020</p>	<p>Nalini Shah Music Academy is the latest addition in the educational endeavour of Rajasthani Sammelan Education Trust. Nalini Shah Music Academy is a Hindustani classical and semi classical vocal and Indian and western Instrumental Music training Institute with an aim to train the learner with basic and technical knowledge of Music offering varied music learning courses across all age groups.</p>	 <p><b>NSMA</b> www.nsma.org.in</p>

## Facilities @ RSET



Established in 1975

Dhurmal Bajaj Bhavan is a community hall which was constructed in the year 1975-76 with the handsome donations received from Shri Dhurmal Bajaj Charity Trust & other philanthropists of the community. It is situated on S.V. Road, on the opposite side of the Educational Complex of Rajasthani Sammelen Education Trust. It has a spacious, air conditioned hall on the ground floor with a seating capacity of 350 persons. The building has two more halls on the first & second floors. There are air conditioned rooms adjacent to the hall on all the floors. Dhurmal Bajaj Bhavan caters to the needs of the community, as it is rented out to the people for marriage & other social & business purposes. Many cultural activities of the schools & colleges of the trust are also conducted in Dhurmal Bajaj Bhavan.



Established in 2001

Rajasthani Sammelen Education Trust has set up Trivenidevi Deora Chikitsa Sahayata Kosh to provide medical help to needy people. It is managed by Trivenidevi Deora Chikitsa Sahayata Kosh Committee. The committee receives applications for medical help from needy people and on scrutiny of the applications, sanctions and disburses medical aid to the concerned persons who have applied for the same. Many people including the staff of all the institutions have availed of this facility from time to time.



Established in 2002

Durgadevi Saraf Hall is constructed in the educational complex of Rajasthani Sammelen Education Trust & is an air conditioned, sound proof hall with state of the art facilities. It has a seating capacity of approximately 300 persons & is mainly used for organizing seminars, conferences & cultural activities of the educational institutions of the trust. Besides, it is sometimes also given to the members of the community for marriage & other social needs. The hall has all the facilities to cater to business meetings. It has 2 air conditioned rooms adjacent to the hall.



Established in 2010

To maintain universally accepted IT Standards in security, availability and data management, Rajasthani Sammelen Education Trust has decided to have an IT Hub as proper data centre which is supported and managed 24 x 7. The IT Hub is constructed on the 10th floor of the new building, in a built-up area of 3800 sq. ft. It is fully air conditioned and is operational. The main aim of constructing the IT Hub is to make all course material available on line to our students, easy flow of interaction between student and teacher through electronic medium, to create alumni data and keep students attached to our organization life-long through web, to safe guard the campus using video vigilance and electronic access control, to control the entire admission process of all institutions centrally, to safe guard all available data and provide fast internet services within the campus.



Established in 2010

Rajasthani Sammelen Education Trust has started a cafeteria in its premises to provide snacks of large varieties to students. The cafeteria is situated on the ground floor on the south side of Durgadevi Saraf Hall in a total built-up area of approximately 4500 sq. ft. It is used by staff and students of all institutions. Various food items of different price range are supplied by the cafeteria to the students & staff of all our institutions. The cafeteria supplies all kinds of snacks and beverages to the canteens of all the institutions of Rajasthani Sammelen Education Trust.



Established in 2010

Rajasthani Sammelen Education Trust has started an educational outlet in its campus by the name of Ramnarayan Saraf Educational Outlet. This educational outlet is dedicated to the memory of late Shri Ramnarayanji Saraf. The educational outlet is constructed on the ground floor of the new building of Ramniwas Bajaj English High School on the rear side, in a built-up area of 5000 sq. ft., with an independent entrance. In this educational outlet, all stationery items, text books etc. are sold at a reasonable price so that students need not go out to purchase such items elsewhere. It also has xeroxing facility for staff and students.



Established in 2014

Rajasthani Sammelen Education Trust has started an educational outlet in its campus by the name of Ramnarayan Saraf Educational Outlet. This educational outlet is dedicated to the memory of late Shri Ramnarayanji Saraf. The educational outlet is constructed on the ground floor of the new building of Ramniwas Bajaj English High School on the rear side, in a built-up area of 5000 sq. ft., with an independent entrance. In this educational outlet, all stationery items, text books etc. are sold at a reasonable price so that students need not go out to purchase such items elsewhere. It also has xeroxing facility for staff and students.



Established in 2014

Kirandevi Saraf Library and Reading room offers reading room facilities to such students who do not have a peaceful environment at their house. The reading room is open to all students from Standard 8th onwards. The Kirandevi Saraf Library and Reading room facility is available to the students from 6pm in the evening to 9pm and from 9am to 9pm on Sundays & holidays. The library is manned by staff of Rajasthani Sammelen Education Trust and the students are enrolled on payment of nominal fees to access the facilities.

## Other Initiatives @ RSET



Draupadidevi Sanwarmal  
**women's hostel**  
HEAVENLY DOMICILE

Established in 2012

Draupadidevi Sanwarmal Women's Hostel is one of the most prestigious and renowned Women's Hostel in western suburbs of Mumbai. It is located on the 11th and 12th floor of the building facing S.V. Road in RSET campus. The hostel has state of the art infrastructure with three bedded A.C. rooms, Wi Fi enabled recreational area, dining room, dry pantry, laundry and Gym facility. The hostel has round the clock vigilant security services with CCTV surveillance.

[www.dswhostel.org.in](http://www.dswhostel.org.in)



Pravinchandra D. Shah  
**sports academy**  
FITNESS REGIME

Established in 2015

Pravinchandra D. Shah Sports Academy is a state-of-the-art facility, built on an approximate area of 24,000 sq.ft. with the most modern infrastructure. The Academy offers sports facilities like Tennis, Basketball, Box Cricket, Football Volleyball etc. and the turfs, imported from New Zealand, are made to international standards. This is perhaps, the first of its kind in-house sports academy in any of the educational institutions in the north-western part of Mumbai suburbs which caters to the growing needs of the students for sporting facilities. Recently another turf has been created for students to play various games.

[www.pdsa.org.in](http://www.pdsa.org.in)



Jankidevi Bilasrai Bubna  
**boys hostel**  
A WISE HIVE

Established in 2018

Jankidevi Bilasrai Bubna Boys' Hostel provides safe and secured accommodation to male students coming from other states and abroad in Mumbai for obtaining higher and professional education. It is housed in an independent building with seven floors and is situated near RSET campus. It has all state of art facilities such as a canteen, air-conditioned study area on all the floors, lounge and TV room, games room etc. All the rooms are air-conditioned.

[www.jbbh.org.in](http://www.jbbh.org.in)



Remsons Group  
**management research centre**  
MANAGEMENT RESEARCH

Rajasthani Sammelan Education Trust has started Remsons Group Management Research Centre (in memory of Radhadevi Harlalka) in Durgadevi Saraf Institute of Management Studies. Research is an important part of management education for its growth and development. Remsons Group Management Research Centre has been playing an active role in the area of research in management studies. This has given an opportunity of interaction with scholars of reputed universities all over the globe. The Director as well as faculty members of DSIMS have been presenting research papers in many international and national seminars and workshops. We are sure that in future, many scholars will successfully complete Ph. D Programme from Durgadevi Saraf Institute of Management Studies.



IRB  
**scholarship endowment fund**  
HONOURING EXCELLENCE

Rajasthani Sammelan Education Trust has started IRB Scholarship Endowment Fund to provide scholarships to all meritorious students of all the institutions of Rajasthani Sammelan Education Trust. This will give encouragement to many brilliant students to achieve further excellence in education. Meritorious students will be further motivated to work hard and give their best performance in the field of studies.



BKT  
**endowment freeship fund**  
FOSTERING KNOWLEDGE

Rajasthani Sammelan Education Trust has started BKT Endowment Freeship Fund to provide freeship to those students who cannot afford education due to lack of funds. BKT Endowment Freeship Fund is going to provide opportunity to many deserving students to obtain suitable education and thereby make progress in their life by becoming properly qualified.



Jankidevi Bilasrai Bubna  
**endowment freeship fund**  
EMBOLDENING STRENGTHS

Rajasthani Sammelan Education Trust has started Jankidevi Bilasrai Bubna Endowment Freeship Fund to give freeship to the needy and deserving students studying in various educational institutes of RSET. The Jankidevi Bilasrai Bubna Endowment Freeship Fund will provide the much needed financial support to such students who do not have the financial means to pursue their education.



Rajasthani Sammelan  
**skill development centre**  
SCULPTING SKILLS

The proposed Skill development centre aims to advance the skill sets of the students to compete in a global environment. The objective is to provide necessary information and training to develop the skills sets of the students and make them industry ready. The Skill Development Centre will help bridge the industry-academia gap for employability.

PROPOSED

## Declaration

1. I have read the rules regarding admission and shall fully abide by them. I also understand and accept that if any discrepancy is found in the disclosures made by me in my admission form, the college will take appropriate action including cancellation of my admission without any refund of fees.

2. Declaration by parent

I have permitted my son/ daughter/ ward to join this college and I have read the details submitted by him in the admission form. I reiterate that the contents are true and correct. I also assure that my son/daughter/ward shall observe the rules and regulations of the college



Ladhidevi Ramdhar Maheshwari  
**night college of commerce**  
ENLIGHTENING FUTURE

Name of the Student \_\_\_\_\_

Name of the parent \_\_\_\_\_

Course \_\_\_\_\_

Application form no. \_\_\_\_\_

---

SIGNATURE OF THE PARENT

---

SIGNATURE OF THE STUDENT

BLANK



## Admission Procedure for Online Application

1. Please fill the Pre-enrollment form on University of Mumbai website : [www.mu.ac.in](http://www.mu.ac.in) [www.mum.digitaluniversity.ac](http://www.mum.digitaluniversity.ac) and select Ladhidevi Ramdhar Maheshwari Night College of Commerce as the option and follow the instructions displayed on the website. After registering, they must save the Pre-enrollment form and upload the same with the college admission form.
2. The registration number of University of Mumbai's Pre-enrollment form is required to be entered in the College Application form.
3. The college application form is an online form, available on [www.lrmc.org.in](http://www.lrmc.org.in)

### **Please fill the online application and upload the scanned copy of the following documents:**

- a. Passport Size photo
- b. XII Mark sheet
- c. Leaving Certificate
- d. Caste Certificate (wherever applicable)
- e. University Pre-enrollment form

### **Note:**

- Please upload a proper passport size photo taken on a clear background.
  - Documents should be scanned properly, not a photo taken from mobile.
4. On successful submission of Online Application form and scanned documents, the application will be verified by the admission department of the college.
  5. All verified applications will be considered for selection in merit list and will be offered provisional admission on the basis of merit.
  6. The merit list will be displayed on the college website and on the notice board in college.
  7. On selection in the Merit-list, the student would be sent an SMS and Email for payment of fees. Fee is to be paid online, using Net Banking, Debit Card or Credit card.
  8. The admission will be provisional and subject to verification and submission of the original documents.
  9. On successful fee payment, an acknowledgment will be sent on the registered email ID of the student.

If a student fails to submit the original document or if the details provided in the application form does not match with the original document, the admission will be cancelled and the fees paid will not be refunded.



BLANK

# College Activities



## Institutions



Kudilal Govindram Seksaria  
**sarvodaya school**  
INSPIRE, INVENT, INITIATE



Kudilal Govindram Seksaria  
**english school**  
INSPIRE, INVENT, INITIATE



Ramniwas Bajaj  
**english high school**  
UNLEASH YOUR POTENTIAL



Mainadevi Bajaj  
**international school**  
GIVING WINGS TO YOUR DREAMS



Durgadevi Saraf  
**junior college**  
IN PURSUIT OF EXCELLENCE



Ghanshyamdas Saraf  
**college of arts & commerce**  
EDUCATION EMPOWERS



Kirandevi Saraf  
**institute of complete learning**  
WIDENING HORIZONS



Durgadevi Saraf  
**institute of management studies**  
WE CREATE LEADERS



Durgadevi Saraf  
**global business school**  
LEARN AND INSPIRE



Deviprasad Goenka  
**management institute of media studies**  
INDIA'S PREMIER MEDIA SCHOOL



Ladhidevi Ramdhar Maheshwari  
**night college of commerce**  
ENLIGHTENING FUTURE



Ramdhar Maheshwari  
**career counseling centre**  
STEERING TO SUCCESS



Kunjibihari S. Goyal  
**online academy**  
LEARNING BEYOND BOUNDARIES



Draupadidevi Sanwormal  
**women's hostel**  
HEAVENLY DOMICILE



Pravinchandra D. Shah  
**sports academy**  
FITNESS REGIME



RS CA  
**study centre**  
INTELLECTION HUB



Mainadevi Bajaj  
**international playschool**  
YOUNG EVOLVING MINDS



Jankidevi Bilasrai Bubna  
**boys hostel**  
A WISE HIVE



Nalini Shah  
**music academy**  
MUSICAL HARMONY



Rajasthani Sammelan  
**skill development centre**  
SCULPTING SKILLS

## Endowment Funds & Research Chair



Remsons Group  
**management research centre**  
MANAGEMENT RESEARCH



I R B  
**scholarship endowment fund**  
HONOURING EXCELLENCE



B K T  
**endowment freeship fund**  
FOSTERING KNOWLEDGE



Jankidevi Bilasrai Bubna  
**endowment freeship fund**  
EMBOLDENING STRENGTH

## Facilities



Dhurmaal Bajaj  
**bhavan**  
COMMUNITY PARADISE



Durgadevi Saraf  
**hall**  
TREASURING MEMORIES



Trivenidevi Deora  
**chikitsa sahayata kosh**  
HELPING TO HEAL



Ramnarayan Saraf  
**educational outlet**  
ONE STOP EDU-SHOP



Vijay Pal Singh  
**health centre**  
WEALTH OF WELLBEING



Kirandevi Saraf  
**library and reading room**  
WORLD OF KNOWLEDGE



Rajasthani Sammelan  
**I.T. hub**  
LINKING GLOBALLY



Rajasthani Sammelan  
**food court**  
FOOD FOR THOUGHT

**Ladhidevi Ramdhar Maheshwari Night College of Commerce**

RSET Campus, Opp. Bajaj Hall, S V Road, Malad (W), Mumbai - 400 064.

Phone: 022 45207788 | info@lrmc.org.in | www.lrmc.org.in